



The Look of Cone 10 in Cone 6 Firing

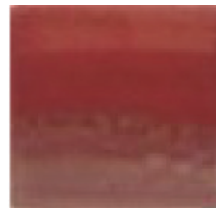
Firing is the “magic” of ceramics, where our clays and glazes are changed forever in the heatwork of the kiln. Effective heatwork builds on the interplay of two variables: time and temperature. You might think of it like cooking your favorite ribs: you can cook them long and slow, or fast and hot. The ribs get done either way, and they’re equally delicious, but the flavor and texture are different depending on how they’re cooked. The same principle applies with glazes!

Steven Hill, in his 2012 workshop here at Georgies, discussed at length how he achieved the looks and glaze combinations of cone 10 work at cone 6 by matching the firing cycle of his electric kiln to his gas kiln’s cycle. One of Steven’s inspirations was an article titled “Glazes & Glazing” by Dr. Carol Marians. At one time she rented studio space here at Georgies, so we were familiar with her work. In the article, she used one iron-rich glaze with 7 different schedules to get 7 unique and repeatable results! We test-fire our glazes in Skutt kilns with the cone fire mode set to reach cone 6 at medium speed with no hold time, but we were inspired to experiment too. Based on what we’ve seen so far, we have to say “wow!”

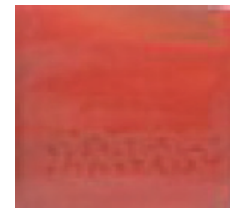
We’d like to share with you the two firing schedules we’ve tried so far. First we tested single glazes and then went on to glaze combinations, overlaps and waxed designs. This is just the beginning of the possible combinations. These experiments clearly point the way to a whole new world of creative options in color and finish.



GLW34 Ohata Red at our normal cone 6 test firing.



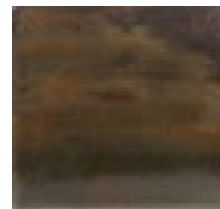
GLW34 fired with schedule #1 (details below).



GLW34 fired with schedule #2 (details below).



PG602 Incredible Black



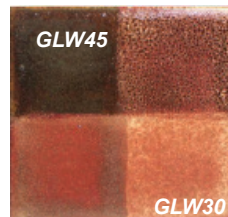
GLW45 Plum Black



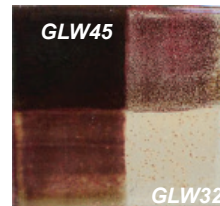
PG616 Buckwheat



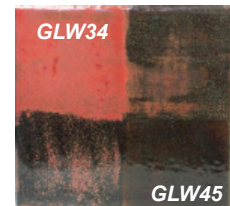
For these three tiles we applied 1, 2, 3 and 4 coats in horizontal stripes on the tile to test the variation in application. Thickness makes a difference too.



GLW45 Plum Black with GLW30 Cinnamon



GLW45 Plum Black with GLW32 Latte



GLW34 Ohata Red with GLW45 Plum Black

For these three tiles we did over/under combinations of the two glazes, then fired with schedule #2. The cone 10 resemblance is superb!

Firing Schedule 1: 5 Segments

Segment	Ramp	Temp	Hold
1.....	@ 100° F/hour.....	to 220° F and	for 30 minutes
2.....	@ 350° F/hour	to 2000° F and	for 0 minutes
3.....	@ 100° F/hour.....	to 2190° F and	for 60 minutes
4.....	*9999.....	to 1900° F and	for 0 minutes
5.....	@ 50° F/hour.....	to 1400° F and	for 30 minutes

(allow the kiln to cool naturally after segment 5)

Firing Schedule 2: 6 Segments

Segment	Ramp	Temp	Hold
1.....	@ 200° F/hour	to 200° F and	for 0 minutes
2.....	@ 500° F/hour	to 2100° F and	for 30 minutes
3.....	@ 30° F/hour	to 2190° F and	for 0 minutes
4.....	*9999.....	to 1750° F and	for 30 minutes
5.....	@ 50° F/hour.....	to 1600° F and	for 60 minutes
6.....	@50° F/hour.....	to 1500° F and	for 0 minutes

(allow the kiln to cool naturally after segment 6)

(*9999 is a default code to allow the kiln to cool naturally and then resume with the program when it reaches the designated temperature)