

... see what's hatching this spring  
at GEORGIES !



This spring see all the possibilities  
that GEORGIES glazes can bring  
to your garden, or outdoor living  
spaces !

Our 3 pole TOTEM makes use of 2 of our clays :  
CC520 G Mix ^ 6 , a creamy white stoneware  
CC535D Dark Chocolate Trail Mix ^6

We also used our line of Interactive pigments,  
both our Gloss and Sculptural line of glazes,  
and varied techniques we'll share with you !



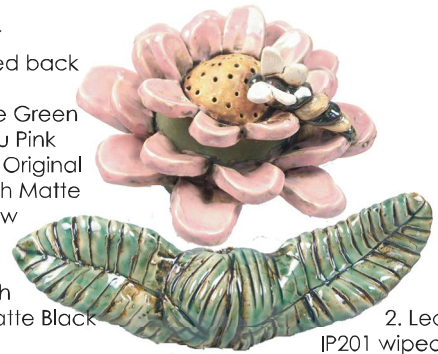
*Georgies*

CERAMIC AND CLAY CO.

PORTLAND • EUGENE

www.georgies.com 800.999.2529

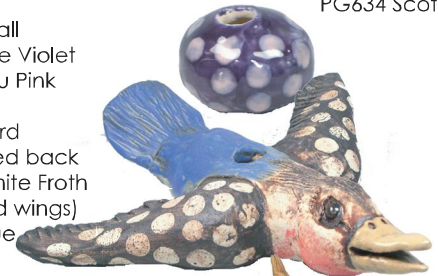
1. Flower  
IP201 wiped back  
overall  
IP204 Olive Green  
PG637 Tutu Pink  
GLW04JS\* Original  
Peanut Ash Matte  
GLW21 Raw  
Honey  
GLW23  
White Froth  
GLW44 Matte Black



2. Leaves  
IP201 wiped back  
PG634 Scotch Pine

3. Purple Ball  
PG638 Blue Violet  
PG637 Tutu Pink

4. Flying Bird  
IP201 wiped back  
GLW23 White Froth  
(head and wings)  
GLW02 Blue  
Jeans  
IP202 Tree Bark, over waxed dots  
GLW21 Raw honey  
PG602 Incredible Black



5. Branches  
IP201 wiped back  
GLW04JS\* Original Peanut  
Ash Matte.  
GLW03 Avocado Ice  
PG624 Ripe Apple

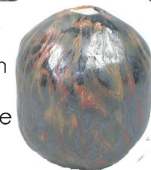


6. Ball  
PG633 Blizzard Blue  
IP211 Wormwood

7. Radish  
IP201 wiped back  
PG634 Scotch Pine  
PG644 Red Satin  
GLW12 Eggshell



8. Ball  
GLW36 Mustard Wood Ash  
.... waxed lines  
GLW06 Liquid Luster Bronze  
over top



9. Connector  
GLW25  
Aqua  
Gemstone

10. Pear  
IP201 Mahogany wiped  
back overall.  
PG634 Scotch Pine  
GLW21 Raw Honey with  
PG645 Avocado satin applied  
over the top.  
PG644 lightly sponged



11. Square Pod- Dk Chocolate clay  
GLW03 Avocado Ice  
GLW 39 Vanilla  
Cream



12. Pod  
Dk Chocolate Clay  
GLW39 Vanilla Cream  
GLW03 Avocado Ice



13. Leaf - Dk Chocolate  
clay.  
GLW08 Copper  
Palina  
GLW04JS\* Orig. Peanut Ash

