

1. Baby Birds  
 IP201 wiped back  
 GLW23 White Froth  
 PG624 Ripe Apple  
 PG637 Tutu pink  
 GLW21 Raw  
 Honey  
 PG602  
 Incredible  
 Black

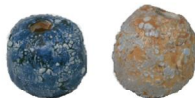


2. Bird's Nest  
 IP201 wiped back  
 GLW04JS\*  
 Original Peanut  
 Ash Matte  
 PG624 Ripe Apple  
 PG637 Tutu Pink  
 PG602  
 Incredible Black



1. Bird House  
 IP201 wiped back  
 GLW04 JS\* Original Peanut Ash  
 GIW26 Mustard Wood Ash  
 GLW06 Liquid Luster Bronze  
 GLW23 White Froth  
 PG642 Blizzard Blue w/ GLW25  
 stripes inlaid.  
 PG637 Tutu Pink  
 PG624 Ripe Apple Red  
 PG 634 Scotch Pine  
 GLW02 Blue Jeans  
 GLW21 Raw Honey

3. Jujube Balls  
 IP208 Winter Storm  
 IP203 Golden  
 Straw.....



.... with GLW15 Jujube  
 sponged on top

4. Dot Ball  
 GLW06 Liquid  
 Luster Bronze  
 Under..... dots.....



....waxed dots  
 PG641 White Cloud  
 over the top

6. Squash  
 IP202 Tree  
 Bark wiped  
 back  
 GLW23 White  
 Froth  
 IP203 lightly  
 sponged



5. Black & White Ball  
 GLW23 White Froth  
 IP202 Tree Bark brushed  
 stripes over

7. Connector  
 GLW37 Pure White Matte  
 GLW41 Cool Lime over



8. Raised Dots Ball  
 IP201 wiped back  
 PG639 Hot Orchid  
 PG638 Blue Violet



9. Ripe Apple Ball  
 PG624 Ripe Apple under...  
 ....wax design  
 PG637 Tutu Pink over  
 (or use PG621 Wonder Red  
 for a lighter tone)  
 Your application matters!



10. Brown Pod  
 Dk Chocolate  
 clay  
 GLW23  
 White  
 Froth



12. Corn  
 IP201  
 wiped  
 back  
 GLW04JS\*Original Peanut Ash Matte  
 PG634 Scotch Pine  
 PG644 Red Satin  
 PG638 Blue Violet



11. Leaf  
 Dk Chocolate clay  
 GLW03 Avocado Ice ( this clay takes  
 a very light hand w/ glaze application,  
 over application produces faults)



3. Big Bird  
 Dk Chocolate  
 clay  
 IP208 Winter Storm wiped  
 back. GLW37 Pure White  
 Matte. PG602  
 GIW21 Raw  
 Honey



2. Glaze inlay Ball  
 PG624  
 ... waxed all over  
 design carved  
 through wax  
 PG602 Incredible  
 Black applied  
 over wax.

4. Connector  
 GLW32  
 Latte



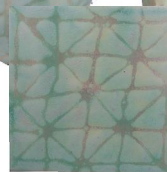
5. Ball  
 GLW49  
 Peking Blue



6. Branch  
 IP201 wiped  
 back  
 GLW04JS\*



7. Design Ball  
 GLW03 Avocado  
 Ice... wax design  
 GLW39 Vanilla  
 Cream over the  
 top.



..this same  
 combination on  
 Dk Chocolate  
 clay

8. Jujube ball  
 IP208 / GLW15 Jujube sponged



9. Tomato  
 PG638 wiped back w/  
 PG621 Wonder red over



10. Aqua  
 Gemstone Ball



11. Carrots  
 IP202 wiped back  
 IP204 Olive  
 GLW32 Latte with IP203  
 lightly brushed on top of  
 Latte.



*Georgies*  
 CERAMIC AND CLAY CO.  
 PORTLAND • EUGENE