

AQUAVAR

Aquavar, a water-based resinous plastic, is a versatile paint product for art and craft use. Use it as an adhesive or for watercolor, gouache, posters, gesso, acrylics, collage, paper mache, decal transfer, unfired pottery glaze, and more.

- Bonds sand, rock, wood or metal to canvas or any porous surface. For tissue paper collage or paper mache, thin Aquavar about 50% with water.
- Make your own acrylic paints, any color: Add a few drops of liquid household detergent to full-strength Aquavar. Mix this liquid into dry tempera paint with a flat knife or the back of a spoon.
- See our free instruction sheet on how to use Aquavar for an unfired, crystal clear, oven-cured protective glaze.
- Aquavar seals and protects your projects made of plaster gauze, paper mache, and other porous materials.

	AQUAQ.....Quart.....	\$ 9.95
Go to georgies.com/aquavar	AQUAG.....Gallon.....	\$28.95
for more information.	AQUAB.....Instructions	Free!

MAGIC-SCULPT

Magic-Sculpt is a two-part resin putty useful for repairs and small, detailed objects or accessories where clay is too fragile. Knead together equal amounts of the two components and begin working: stuff and smooth it into cracks or rough out your desired shape. When Magic-Sculp sets, it can be sanded, cut, drilled or carved. Magic-Sculpt comes in a neutral color and accepts paint. DO NOT FIRE IT.



MS.....16oz kit	\$18.95	MS5 5lb kit	\$51.95
-----------------------	---------	------------------------	---------

SCULPTAMOLD

SCULPTAMOLD is a dry, white non-toxic compound that models like clay and sets up plaster-hard in 30 minutes. Shake the closed bag to blend the contents well. In a separate bag, pull out as much dry material as you can use within the 30 minute time frame, add water as directed on the bag and begin modeling. Clings to almost all clean surfaces and can be applied to an armature or any core without cracking. Add freshly mixed layers to build up thickness and add details.



SC3A	3lb bag.....	\$11.10 ea
------------	--------------	------------

BEESWAX

Sheets

Each sheet measures 8" x 17" with a honeycomb pattern. See our website for the 13 colors that we carry - mix colors for quantity price breaks!

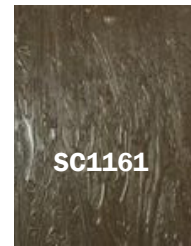
When you buy ...	1-9 @	10-99 @	100+ @
BXA.....	\$3.50	\$3.25.....	\$2.80

Cakes & Pellets

The color of natural beeswax may vary. Beeswax melts at 143°F to 149°F and has a distinctive honey odor. Our cakes and blocks have been filtered and refined.

BXC.....	2oz cake.....	\$2.50 ea	
When you buy ...	1-4 lbs @	5-9 lbs @	10+ lbs @
BX or BXW	\$21.95	\$20.95.....	\$19.95

WAXES



Microcrystalline Wax

Victory White is a soft micro wax with a matrix of extremely small crystals, and melts at 149°F. Just as workable as Victory Brown, which melts at 170°F, but has less surface stickiness. Neither are suitable for candles.

K143Q.....	2½lb brick	\$15.00 ea
K143	10lb slab 1-5 @.....	\$49.00 ea
	60lb (1 case = 6 slabs)	\$264.00
SC1161Q	2½lb brick	\$15.00 ea
SC1161.....	10lb slab 1-5 @.....	\$49.00 ea
	60lb (1 case = 6 slabs)	\$264.00

Paraffin Wax

Classic white paraffin: 130°F is soft and adheres well to the sides of containers & tea light candles. 140°F is harder and best for votive and pillar candles. Does not frost.

AR125.1.....	130°F, 1lb.....	\$4.25 ea
AR125.....	(11lb slab) 1-4 @	\$39.00 ea
	55lb (1 case = 5 slabs)	\$170.00
AR143.1.....	140°F, 1lb.....	\$4.25 ea
AR143.....	(11lb slab) 1-4 @	\$39.00 ea
	55lb (1 case = 5 slabs)	\$170.00

Wax prices are subject to change with oil prices in the world market. Please call for current prices.

