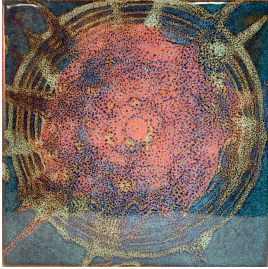


TYE DYE - SPIN ART

Fun-Easy-Retro with Great Glaze Response
Expect the Unexpected !



You can do Tye Dye Spin Art on flat tile, plates, platters or 3D forms such as bottles, cups, it's up to you and your imagination.

We used our wheel for glazing! The spin of the wheel creates the patterning, but the combos can be reproduced by any method of layering glazes you may choose.

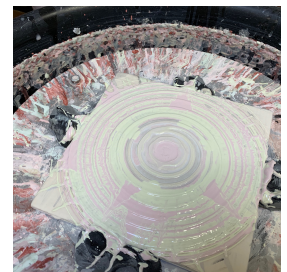
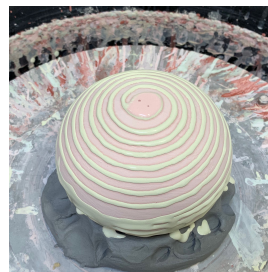
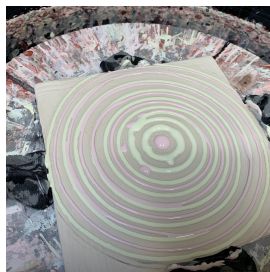
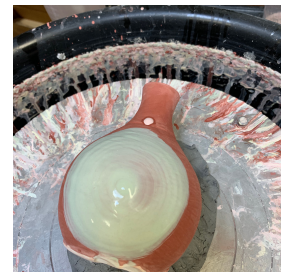
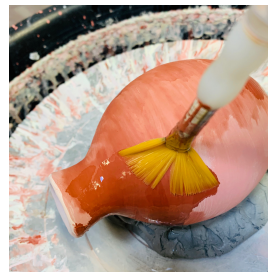
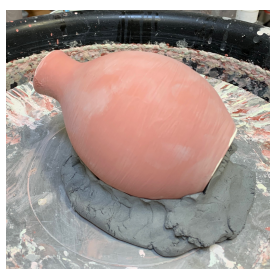
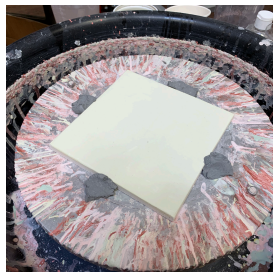


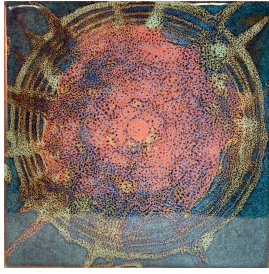
Here's all you will need:

1. Your piece with with 2 brushed coats of your choice base glaze.
2. "Opening" media to allow glaze movement.
3. Brushes and glaze applicators.

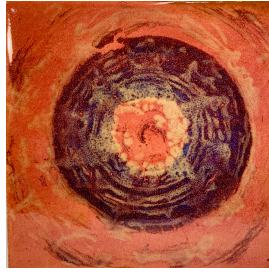
Tiles or flat pieces are the easiest form to practice with. Before you begin you will want to thin your media, such as Amaco Gum Solution with water. I found 2 parts water to 1 part gum worked well. Both the glycerin and soap worked well with only a wet brush.

- Fix you tile or 3D form to your wheeled with soft clay as if you are centering to trim.
- Brush your media over the area you intend to apply you contrasting glaze for design.
- You can brush your first glaze choice over part or all of the exposed area you prepped with the opening solution. You can alternately spiral it on with your wheel on slow.... This is just about the Application.
- Your 3rd color choice will be spirally applied, slowly again.
- Now you are ready to "Spin" your design.
- Rev up your speed, stop and look. While your glaze is still fluid you have a chance to add glaze or continue to spin.

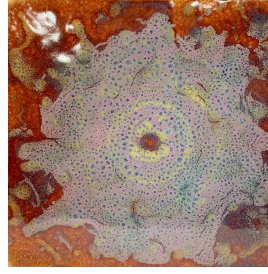




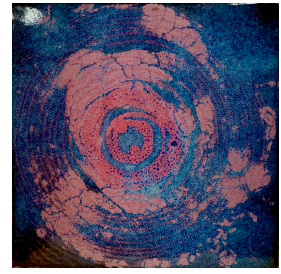
Base TD502 Galaxy Blue
TD508 Cherry Fizz
TD512 Pistachio



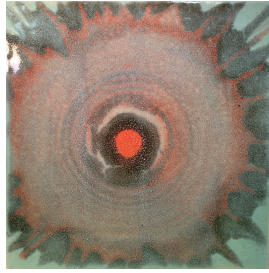
Base TD509 Rose Gold
TD502 Galaxy Blue
TD512 Pistachio
TD513 Orange Neon



Base TD503 Tidal Pool
TD511 Purple Velvet
TD512 Pistachio



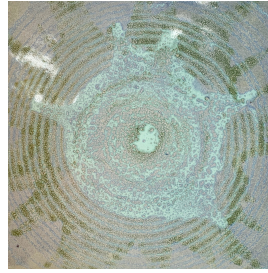
Base TD504 Blue Dusk
TD511 Purple Velvet
TD508 Cherry Fizz



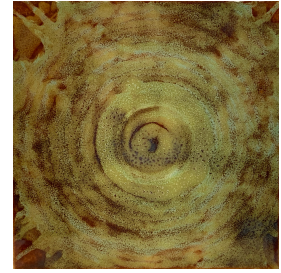
Base TD507 Seafoam
TD506 Lichen Green
TD513 Orange Neon



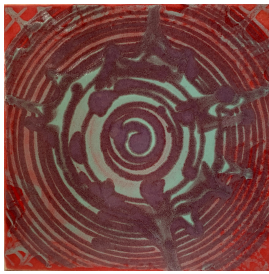
Base TD509 Rose Gold
GS409 Purple Satin
TD513 Orange Neon
TD512 Pistachio



Base TD510 Halo Purple
TD506 Lichen Green
TD507 Seafoam



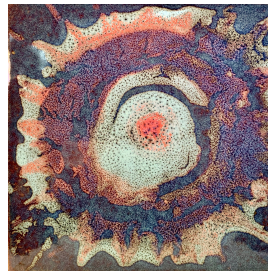
Base TD503 Tidal Pool
TD507 Seafoam
TD512 Pistachio



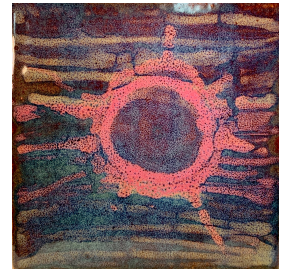
Base GS405 Rouge Red
TD511 Purple Velvet
TD507 Seafoam



Base TD506 Lichen Green
TD505 Twilight Blue
TD508 Cherry Fizz



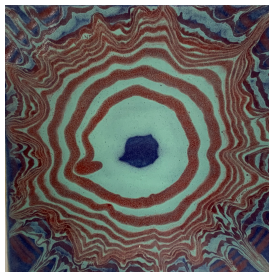
Base TD502 Galaxy Blue
TD507 Seafoam
TD513 Orange Neon



Base TD502 Galaxy Blue
TD512 Pistachio
TD508 Cherry Fizz



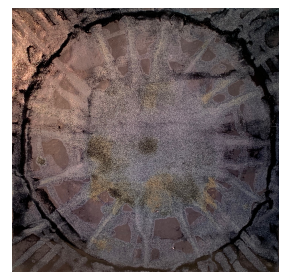
Base TD513 Orange Neon
TD502 Galaxy Blue
TD507 Seafoam



Base GS409 Purple Satin
TD507 Seafoam
TD508 Cherry Fizz



Base GS405 Rouge Red
TD512 Pistachio
TD513 Orange Neon



Base GS412 Black Satin
TD502 Tidal Pool
TD503 Galaxy Blue

Georgies
CERAMIC & CLAY CO.