

IP201- IP212 brushed 1 coat - no glaze - fired to ^6



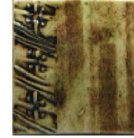
IP205 Wiped back - unfired



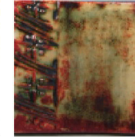
IP205 Fired - no glaze



IP205 with PG629



IP205 Wiped back w/GLW32



IP205 Wiped back - texture w/GLW32



Use Interactive Pigments under your Glazes



IP207, 203, 205 under PG630

Before & After Firing - IP202 wiped back/IP208,203,201,204,PG629

IP208 under PG633

IP202 under GLW49

IP207 under GLW53

INTERACTIVE PIGMENTS can be used in many ways. It is important to know that they will behave differently with each clay body and glaze that you try them with, so - TEST! All of the tiles pictured here were made with Georgies Timberline ^6 clay, a stoney gray/white and vitreous body.

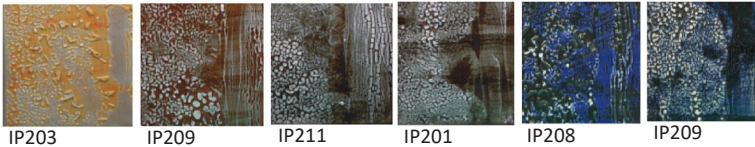
Use INTERACTIVE PIGMENTS under your glaze, on ^04 bisque as a solid coverage, or as a wipe-away-antique effect, (which is especially attractive when you have created texture and want to highlight that element).

Use INTERACTIVE PIGMENTS on top of your raw glazes as decorative brushstrokes - with wax resist - to create a pattern or design. Enhance the wax design by carving through the wax which will create an "in-line" channel for the pigment.

Use INTERACTIVE PIGMENTS over the raw glaze as a MAJOLICA technique, in a painterly fashion, which overlap and utilize brushwork.

Create your own sponge stamps and use them either under or on top of the glaze. It's best to brush your sponge stamp with pigment as the sponge can absorb too much.

When wiping back the pigment or handling pieces with large surfaces covered in pigment, always wear protective gloves. It is also very messy!



IP203

IP209

IP211

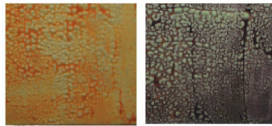
IP201

IP208

IP209

Use INTERACTIVE PIGMENTS under specialty glazes for unique effects. GLW15 Jujube glaze (top row) beads when applied with a sponge, and forms a linear pattern when applied with a brush.

GLW23 White Froth (left) behaves differently on each clay body, but will appear smoother when more thinly applied, puffer and more breaking when applied thickly.



IP203

IP202

DECORATE or DESIGN with INTERACTIVE PIGMENTS on top of raw glazes. Use your favorite brushes; natural hair or sumi-style works well, and apply with one stroke. Feel free to thin the pigment if needed. For sponge stamps, brush a thin coat of glaze/pigment onto the stamp.



IP212 over GLW32



IP202/203* over GLW32



IP202 over GLW32



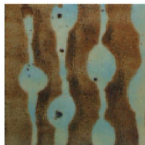
IP207 over GLW32



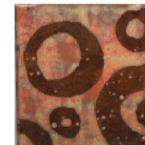
IP207 over PG634

*When IP202 & IP203 come into contact with each other, they often create a rosey blush not evidenced when used independently.

Using **WAX RESIST** helps highlight the glaze of choice, creating design, and allowing the INTERACTIVE PIGMENTS to flow and pool, varying the thickness, adding more dimension and interaction with the underlying glaze. The wax we use is Premium Wax Resist.



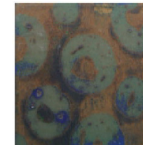
IP211 over PG642



IP203 over GLW45



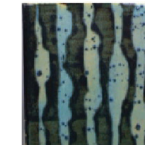
IP212 over PG642



IP211 over GLW47



IP207 over PG631



IP207 over PG642



IP202/203* over PG633

GLAZE INLAY is a fun technique that allows you to create crisp detail into a glazed area. Base coat your piece with your glaze of choice. Apply wax overall or in a design feature, then with a sgraffito tool, scratch through the wax. Apply pigment over the entire surface.



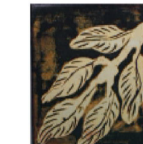
IP205 over PG633



IP211 over PG633



IP206,211 over PG616



IP210 over GLW32



IP207 over GLW03

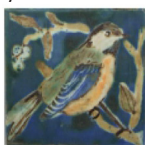


IP207 over PG642



IP203 over PG633

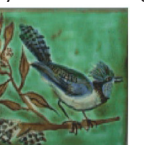
In true **MAJOLICA-STYLE**, get painterly with the INTERACTIVE PIGMENTS. Your best choice of glazes are ones that stay firm and non-moving. Use watercolor or sumi-style brushes and apply the pigments onto your raw glaze, only one stroke is needed. Layer, wax out or sgraffito though your color to create the level of detail you desire. The glaze you work on will express the final outcome.



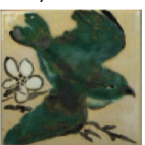
IP212,206,208, 204,210,202 over GLW12



IP202,203*,212, 201,205 over GLW32



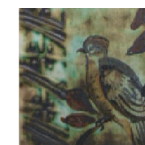
IP207,202,204,201 bird & branch w/ background IP206



IP212, 210 over GLW32



IP202,210,203: wax & sgraffito, IP206 background/over




IP205 wiped back under the glaze. GLW12 applied IP202,203,210 over

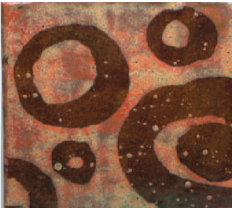
Great Choices for **MAJOLICA:**
 PG601 Perfect White
 GLW32 Latte
 GLW37 Pure White Matte
 GLW12 Eggshell (overs create a porcelain-like finish)




Georgies Interactive Pigments as seen in our NCECA Booth 2010


To find the "IP" color and glaze(s) used in the tiles above, simply find your tile and match to the corresponding number.

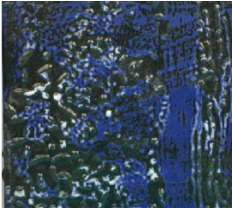
1A  Tile has been base coated with GLW37 Pure White Matte. Using a majolica technique, "painting" on top of raw glaze; IP203 (breast), IP202 (back, wing), IP210 (head, detail lines). IP205 (background) have 1 coat brushed on top and fired to ^6.

1D  GLW34 Ohata Red applied overall. Circles have been waxed out to create pattern that allows base glaze to show. IP203 applied over the top once wax is dry. We used Mobilcer Wax Resist (now discontinued), but Premium Wax Resist will work too!

1B  Tile has been base coated with PG642 Blizzard Blue. "Puffed" streaming lines have been waxed over, showing the base glaze. IP211 has been applied over the top.

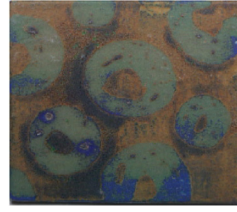
1E  IP202 brushed design under GLW49 Peking Blue Crackle glaze.

1C  IP207 has been sponged onto a ^04 bisque tile with a sponge stamp. Brush 1 thin coat of pigment onto the sponge and lightly apply stamp to the tile. No need to reapply for each stamp. Let dry. Brush or sponge top coat with PG636 Aegean Blue-Green.

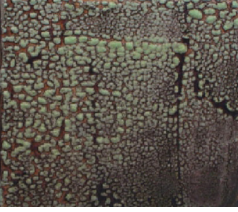
1F  IP208 applied 1 coat to tile surface. GLW15 Jujube White applied with a sponge and brush over the top. Jujube forms round breaking patterns when applied by sponge, linear breaking patterns with a brush. Thickness determines the pattern size. Do not allow to dry between coats (1-3 coats).

1G

PG636 Aegean Blue-Green applied overall on tile. Leaf design waxed out. When wax is dry, sgraffito leaf lines into the wax, to the glaze surface. IP203 is brushed over the entire surface. The "inlay" technique created with the sgraffito line concentrates the pigment.

1H

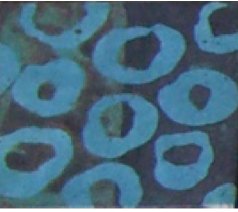
GLW47 Kalamata Black is applied to tile overall. Wax Resist was used to create circle design. IP211 was then applied overall.

2A

IP202 is applied in 1 coat over the surface of the tile. GLW23 is then brushed over the pigment in an irregular coverage to create more interest.

2E

PG642 Blizzard Blue was applied to tile overall. Wax was brushed onto the raw, unfired glaze to create the bird pattern. Sgraffito used on bird detail through the wax. IP201 was applied and wiped back in detail area. IP207 was brushed over entire background.

2B

GLW25 Aqua Gemstone applied to the entire surface of the tile. Circles were waxed out, allowing the glaze color to create a pattern. IP211 was applied over the left side of the tile. IP210 was applied over the right side of the tile.

2F

PG636 Aegean Blue-Green applied to tile overall. Leaf design was waxed and sgraffito lines carved through the wax to glaze below. IP202 applied over the top.

2C

GLW32 Latte was applied to the tile overall. Wax Resist was brushed onto the glaze to create a leaf pattern. Used Sgraffito method for lines in the leaves, through the wax, to the glaze layer. Applied 1 coat IP210 over surface.

2G

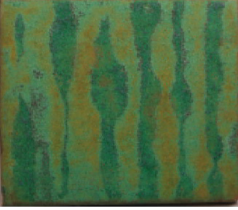
PG642 Blizzard Blue applied to tile overall. X's were waxed to create pattern. IP212 applied over top. *Note - the high metallic surface of this tile does not render it safe for food. Use as a decorative surface only!

2D

PG634 Scotch Pine was applied to entire surface of the tile. IP207 was stamped over the raw glaze with a sponge stamp. It's best to brush a thin coat of pigment onto the stamp and lightly touch the stamp to the surface. Stamp a few times before reapplying your pigment.

2H

IP211 applied to entire surface. GLW15 Jujube White has been both sponged (on the left) and brushed (on the right) over the surface.

3A

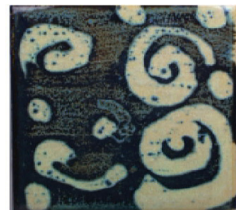
GLW08 Copper Patina applied overall. Wax Resist lines brushed on to form pattern. IP203 applied to overall surface.

3C

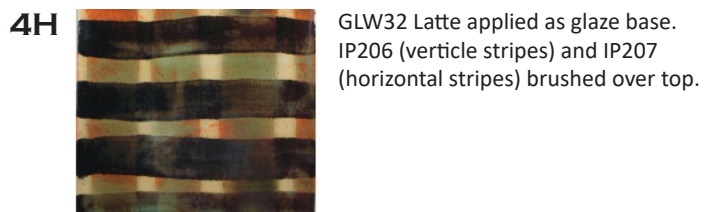
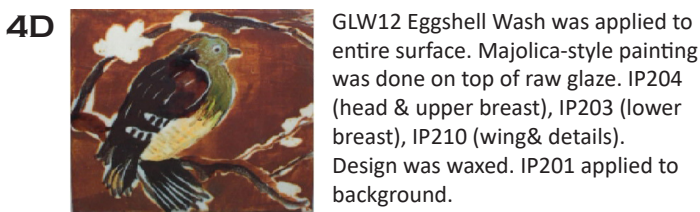
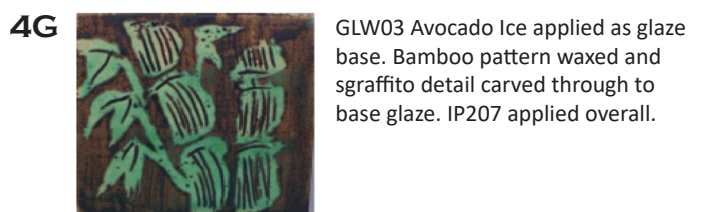
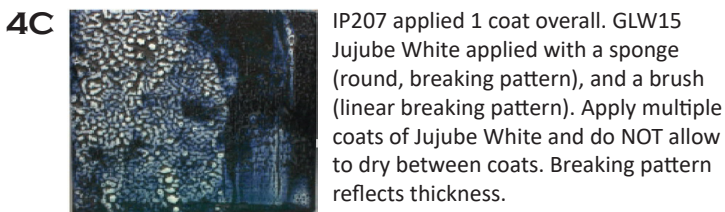
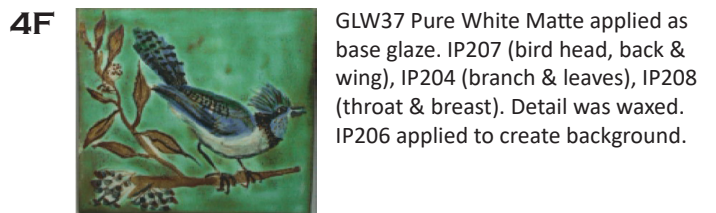
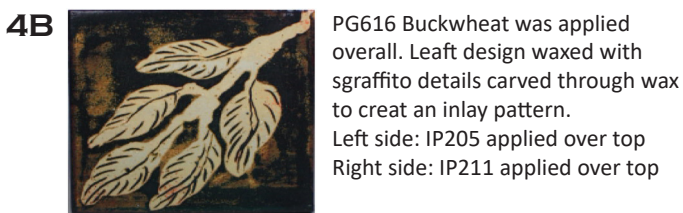
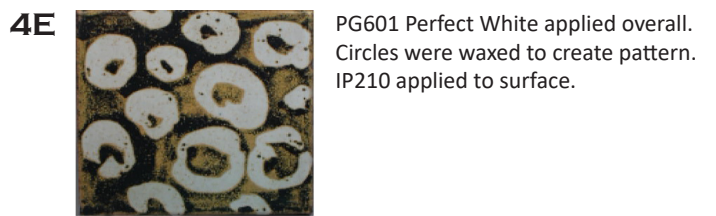
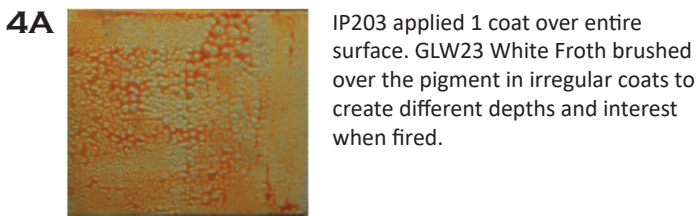
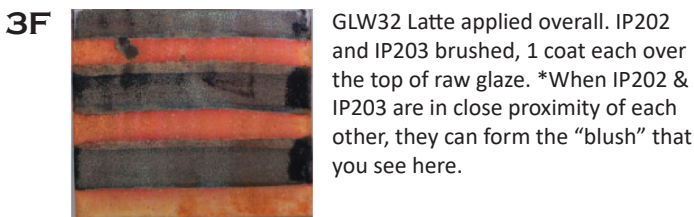
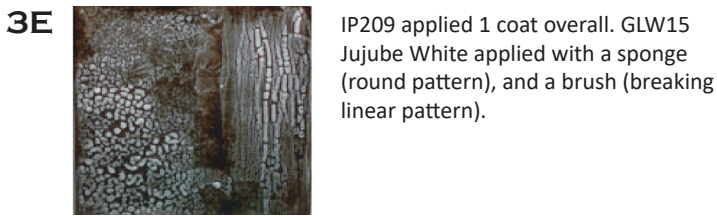
GLW12 Eggshell Wash applied to tile. Pigments applied majolica-style. IP208 (wing), IP204 (back), IP203 (breast), IP209 (leaves), IP201 (branch), IP210 (details). Design was waxed. IP212 applied to create background.

3B

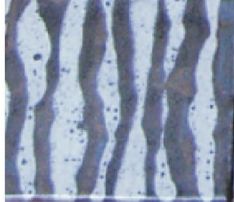
PG636 Aegean Blue-Green applied overall. Leaf design waxed, with sgraffito lines carved for detail through wax. IP211 applied to entire surface.

3D

PG631 Gold Dust (discontinued) applied overall. Swirls were brushed with Wax Resist. IP207 applied over the entire surface.



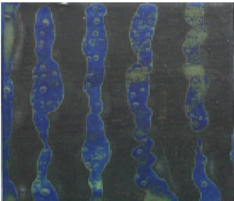
5C  PG636 Aegean Blue-Green applied as base glaze. Wax Resist leaf design with sgraffito detail carved through wax. IP205 brushed over top. *Note - NOT a food safe surface. Use for decorative purposes only.

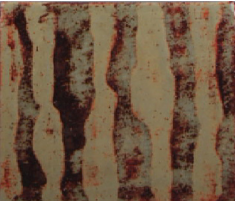
5F  PG601 applied as base coat. Wax Resist pattern lines. IP207 brushed over top.


5D  PG641 White Cloud base coat glaze. Wax Resist leaf decoration with sgraffito detail carved through wax. IP207 applied 1 coat over top.

5G  IP203 applied overall with 1 coat. GLW15 Jujube White applied with a sponge and a brush to create a mix of texture on top.


5E  GLW32 Latte base glaze. IP207 applied with leaf sponge over the top. Apply pigment with a brush lightly to the sponge and gently touch the surface. You will get more than one stamp per pigment application.

5H  GLW47 Kalamat Black applied as base glaze. Wax Resist used to create the line design. IP210 brushed over top.

6A  Tile has bas relief texture; created by wax resist design then washed off in green stage. Bisque fired to ^04. IP211 applied overall and wiped back. GLW32 Latte applied over top of pigment.

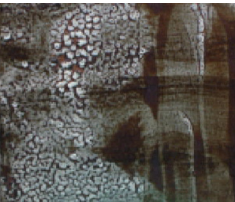
6E  Tile has bas relief texture; created by wax resist design then washed off in green stage. Bisque fired to ^04. IP201 applied and wiped back. PG634 Scotch Pine applied as glaze coat over the pigment wash.

6B  GLW32 Latte used as a base glaze. Bird is painted in majolica-style over top of raw glaze. IP212 (bird body), IP210 (details).

6F  GLW25 Aqua Gemstone applied as a base coat. Wax Resist used to create circle design. IP210 brushed over the top.

6C  PG642 Blizzard Blue applied as base coat. Wax Resist used to create the line design. IP207 brushed over top.

6G  GLW37 base coat glaze painted in 'majolica-style' on top of raw glaze. IP207 (bird), IP203 (breast), IP204 (branches), IP210 (details). PG631 Gold Dust (discontinued) for flower buds. Details waxed. GLW25 Aqua Gemstone applied as background.

6D  IP201 applied overall. GLW15 Jujube White sponged (round, breaking) and brushed (linear) on top to create a variety of surface textures.

6H  Tile has low bas relief texture created with Wax Resist wash-back then bisque fired to ^04. IP207 applied and wiped back. GLW32 applied as a glaze over the wiped-back pigment.