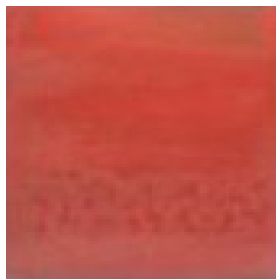


After seeing the results of the previous test, I continued with a few more individual glaze choices as well as some combinations/overlaps. I also slightly altered the firing sequence. The firing schedule for this follow up firing is below.

Alternate Schedule #2 - Six Segments

	Ramp	Temperature	Hold Time
SEG 1	200°F/Hour	200°F	0 Minutes
SEG 2	500°F/Hour	2100°F	30 Minutes
SEG 3	30°F/Hour	2190°F	0 Minutes
SEG 4	9999 (*default code)	1750°F	30 Minutes
SEG 5	50°F/Hour	1600°F	30 Minutes
SEG 6	50°F/Hour	1500°F	1 Hour



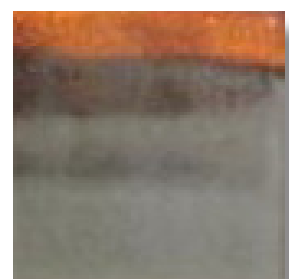
**GLW34  
Ohata -**  
Color moves to a deep rich orange



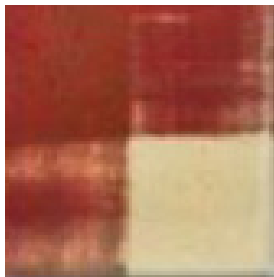
**GLW46  
Northern Lights -**  
Overall color khaki gold



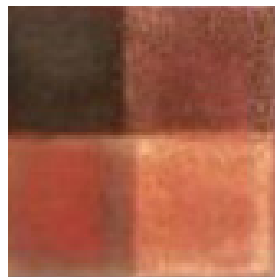
**PG616  
Buckwheat -**  
Mottles to grey blue/white



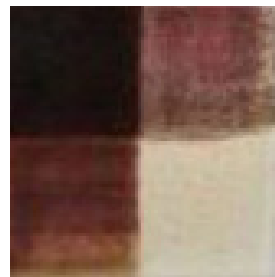
**GLW04  
Liquid Luster Bronze -**  
No real change



**GLW34/GLW32  
Ohata with Latte**



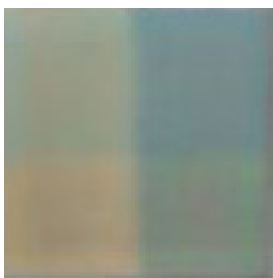
**GLW45/GLW30  
Plum Black with Cinnamon**



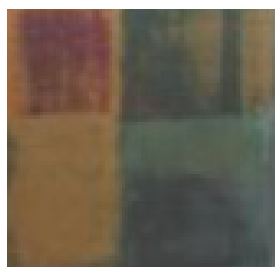
**GLW45/GLW32  
Plum Black with Latte**



**GLW34/GLW45  
Ohata with Plum Black**



**PG631/PG642  
Gold Dust and Blizzard Blue**



**GLW26/GLW47  
Mustard Wood Ash and Kalamata Black**