

Alternative Firing Schedules using Georgies ^6 Oxidation Glazes

After seeing the results of the previous test I continued with a few more individual glaze choices as well as some combinations / overlaps. I also slightly altered the firing sequence. The firing schedule for this follow up firing follows:

Alternate firing schedule #2 : 6 segments

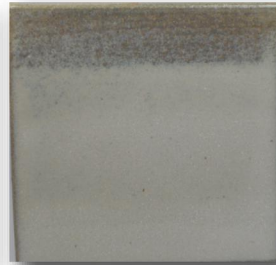
	RAMP	TEMPERATURE	HOLD
SEG #1	200 F / HR	200 F	0
SEG #2	500 F / HR	2100 F	30 minutes
SEG #3	30 F / HR	2190 F	0
SEG #4	9999 *	1750 F	30 minutes
SEG #5	50 F / HR	1600 F	1 hour
SEG #6	50 F / HR	1500 F	0



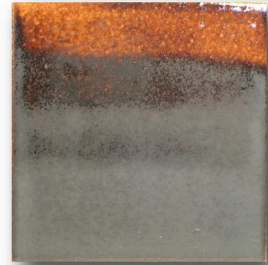
GLW34
Ohata
color moves to a
deep rich orange



GLW46
Northern Lights
overall color khaki
gold



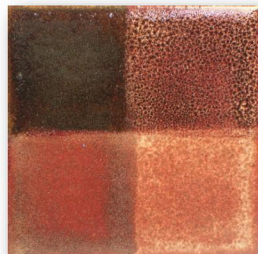
PG616
Buckwheat
mottles to a grey
blue/ white



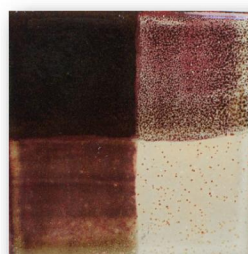
GLW04
Liquid Luster Bronze
no real change



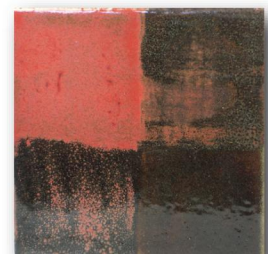
GLW34/GLW32
Ohata/Latte



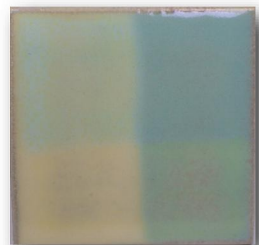
GLW45/GLW30
Plum Black/Cinnamon



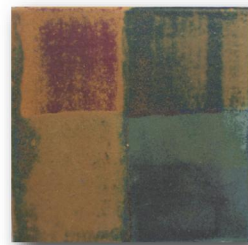
GLW45/GLW32
Plum Black/Latte



GLW34/GLW45
Ohata/Plum Black



PG631/PG642
Gold Dust
Blizzard Blue



GLW26/GLW47
Mustard Wood Ash
Kalamata